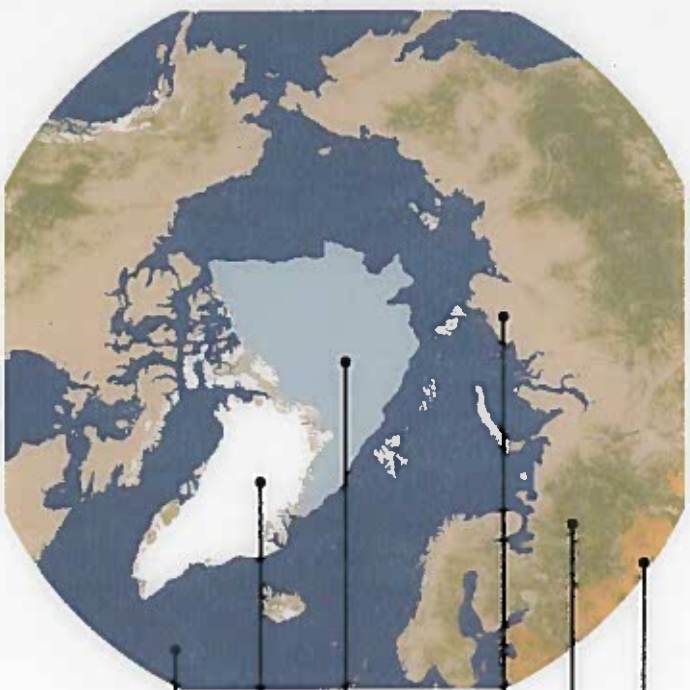




# MAP KEY

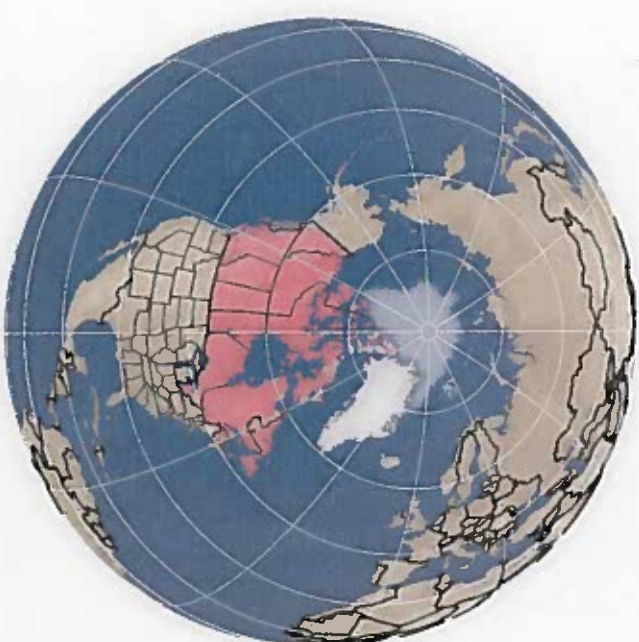


## LAND AND OCEAN COVER



- Agricultural landscape
- Forested landscape <sup>1</sup>
- Treeless landscape <sup>2</sup>
- Permanent polar sea ice (2012)
- Permanent ice and snow
- Open ocean

<sup>1</sup>Composed of environments containing more than 50% tree cover.  
<sup>2</sup>Composed of environments containing less than 50% tree cover, including shrub-dominated environments, grassland environments, lichen-moss environments and bare rock environments.

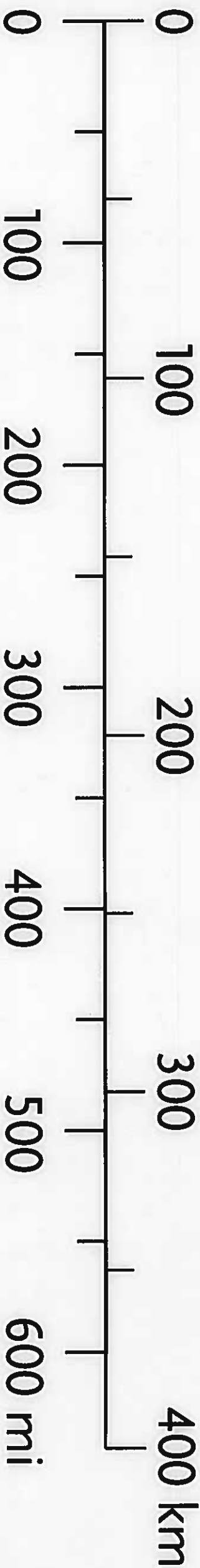


## OCEAN DEPTH (Bathymetry)



- Road
- Railway

## Scale



6.5 metre map

